



# Character and Citizenship Education (CCE)

Ms Adeline Tan (HOD CCE)  
Friday, 2 January 2026

# 1. What is Character and Citizenship Education?



# Character and Citizenship Education (CCE)

- CCE is an integrated programme that is integral to the **holistic development** of our students, leading to **positive life outcomes**.
- CCE aims to develop in our students:



# CCE Learning Outcomes

To build student's **foundation** in **values**, **social-emotional competencies** and **citizenship dispositions** at the **Primary level**.

## Core Values (R<sup>3</sup>ICH)



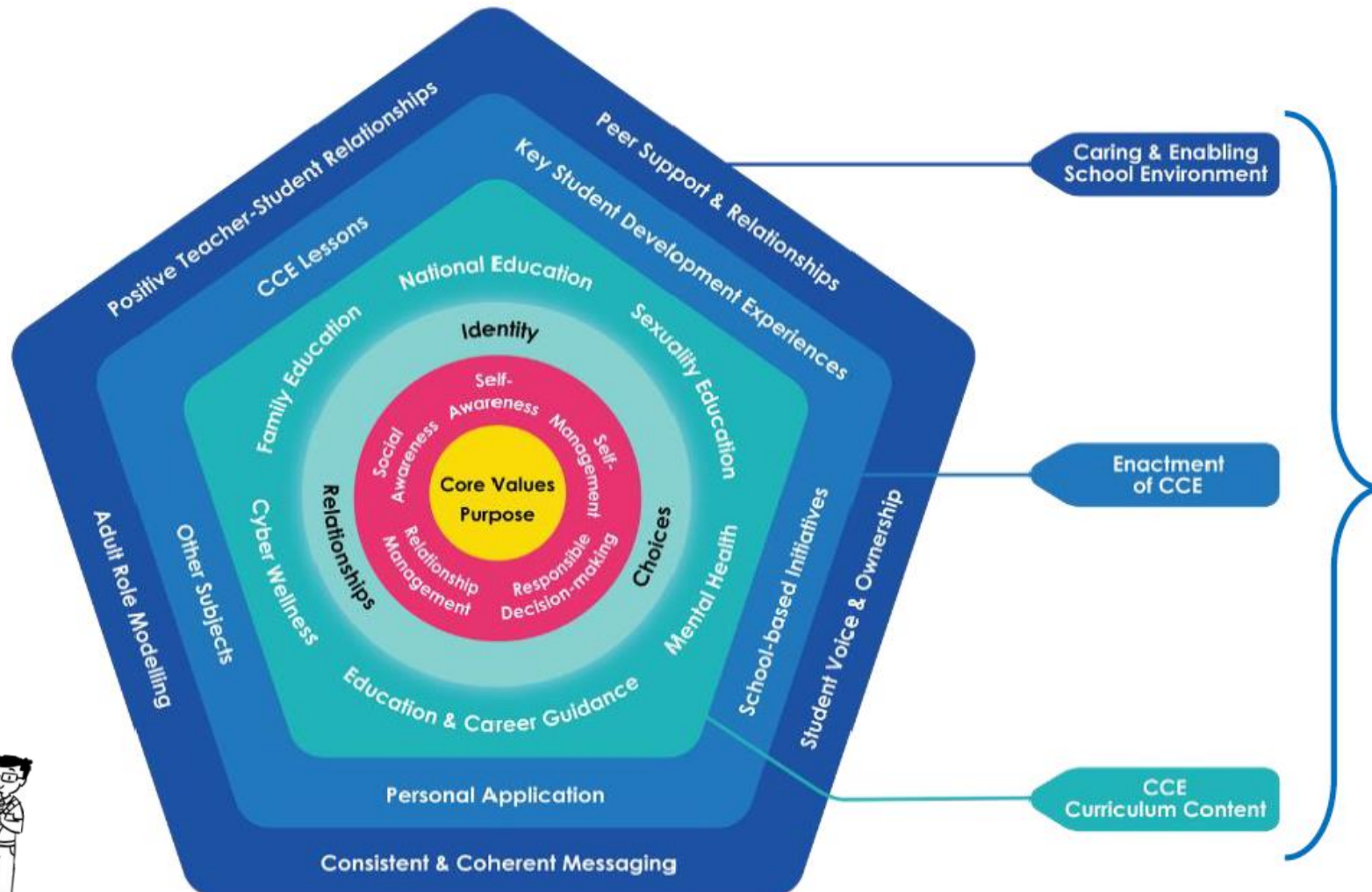
## Social and Emotional Competencies



## Citizenship Dispositions



# CCE Curriculum Frame





# Emerging 21<sup>st</sup> Century Competencies (E21CC)

E21CC are developed through the CCE curriculum and programmes to enable students to thrive while living, learning and working in rapidly changing, highly digitalised, and interconnected environments.



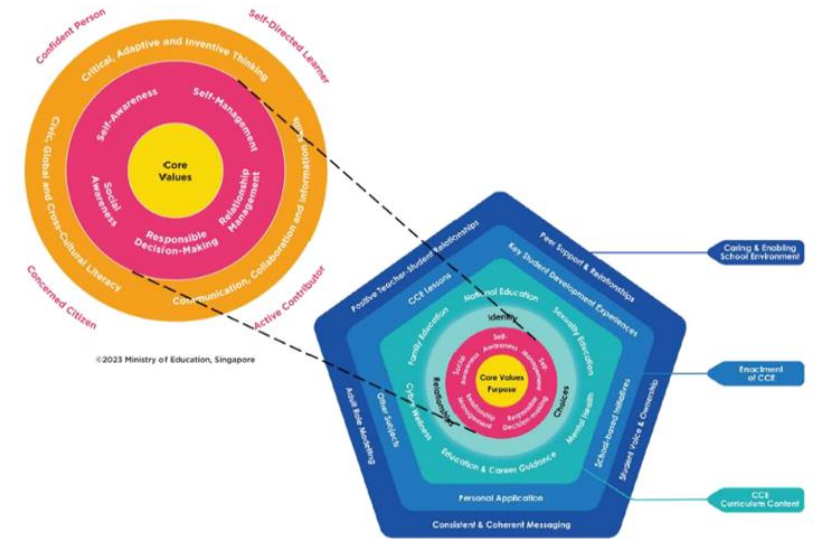
Critical, Adaptive and Inventive Thinking



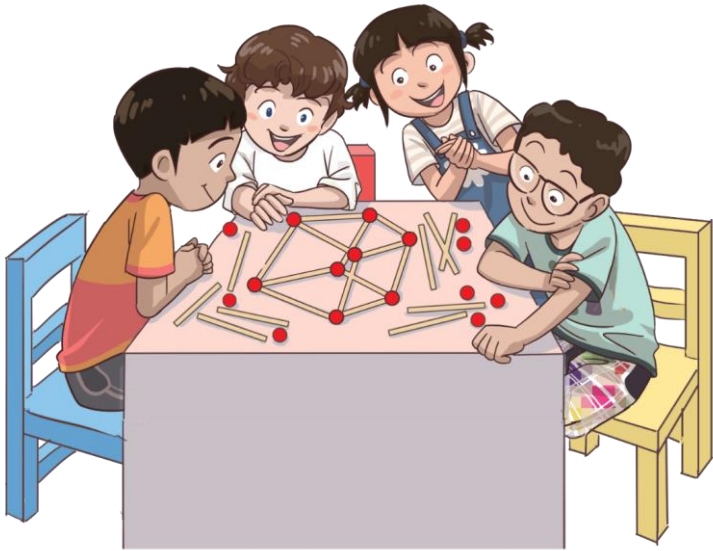
Communication, Collaboration and Information Skills



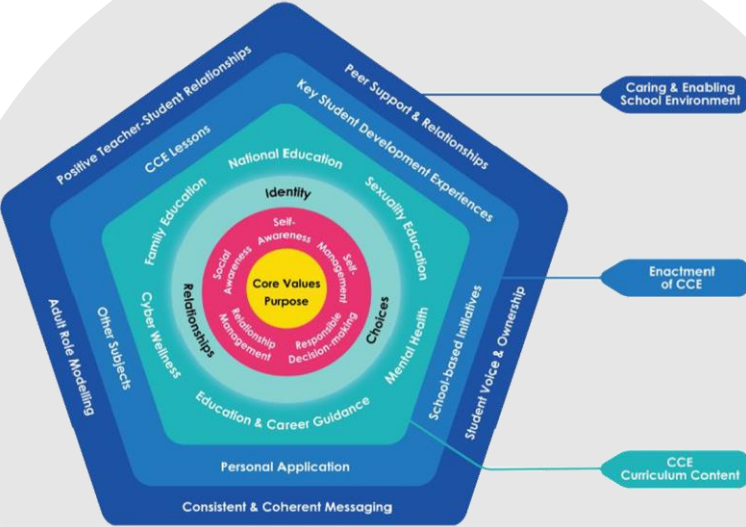
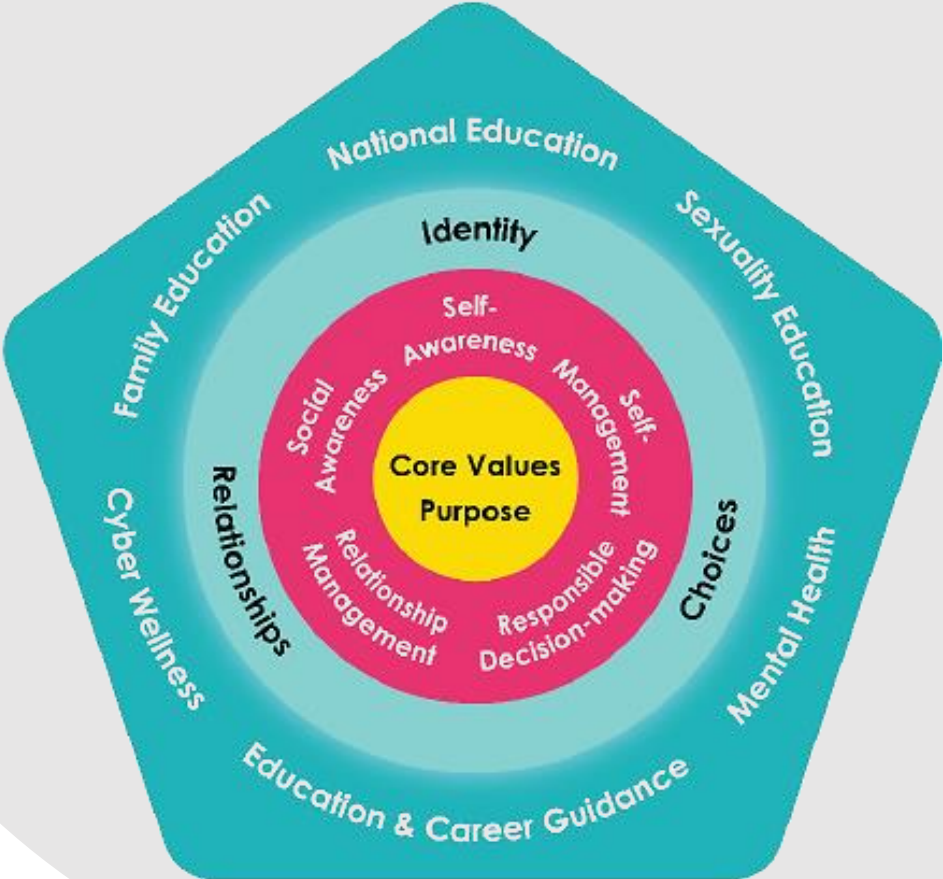
Civic, Global and Cross-Cultural Literacy



## 2. What do students learn in CCE?




# CCE Curriculum Content






# CCE Curriculum Content

CCE lessons are anchored on **3 big ideas**...




## Identity

- Who am I?
- Who do I want to be?
- What does my best self look like?



## Relationships

- How do I relate to myself, others and the world around me?



## Choices

- How do I choose to be?
- How do I choose to act?
- What kind of future do I want?

... and focused on developing a **sense of purpose** in students.

# CCE Curriculum Content

Learn and demonstrate **values** and **social-emotional competencies** through **6 content areas**:



**Cyber  
Wellness**

**Family  
Education**



**Mental  
Health**



**National  
Education**



**Education  
and Career  
Guidance\***

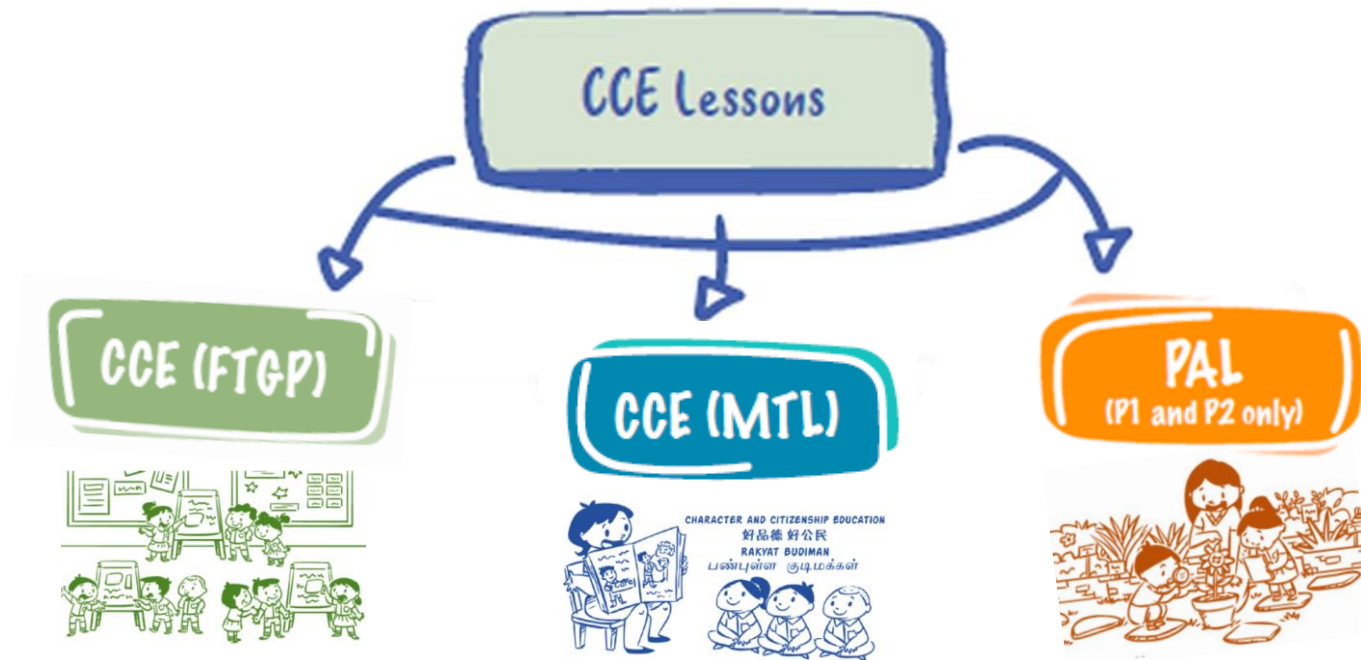


**Sexuality  
Education\***



**\*covered in P5-6**

# CCE in the Classroom

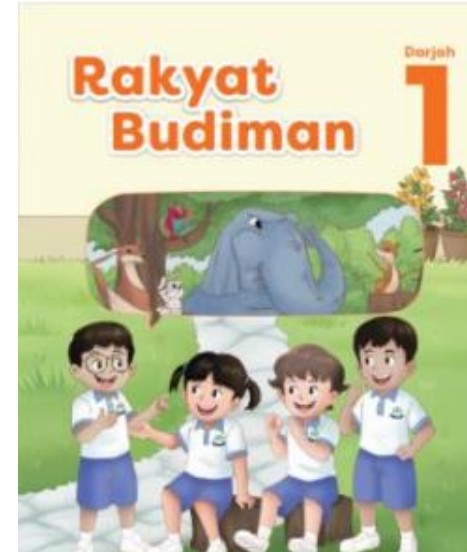
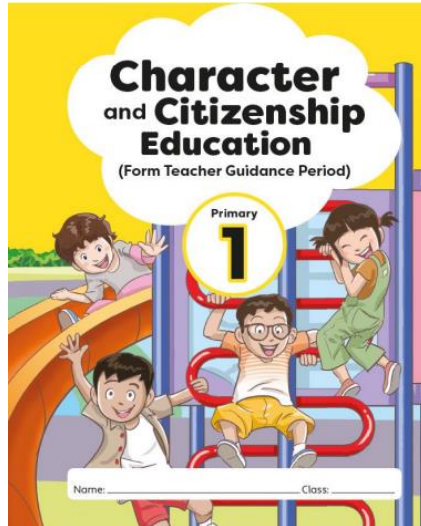


Time provided for teachers to **engage** and **build relationships** with their students through **1-to-1 chat** and **discussions**.

- **Explicit teaching** to address the **holistic developmental needs** of students
- Equip students with **knowledge** and **skills** to better understand and **navigate the real-world**

# CCE Lessons

CCE (FTGP) and CCE (MTL) are **complementary**



CCE (FTGP) and CCE (MTL) lessons are based on the same learning outcomes and uses different context or examples. This reinforces learning and is not a repetition



### 3. The Bendemeer Experience



# CCE beyond the Classroom

*"Every School Experience a CCE Lesson"*

SDEs contribute towards the **holistic development** of our students in the physical, aesthetic, intellectual, moral and social domains.

## Key Student Development Experiences (SDEs)



Values in Action (VIA) +  
Everyday Responsibilities



Student Leadership  
Development (SLD)



NE Commemorative Days



Co Curricular Activities (CCAs)



Education & Career Guidance  
(ECG) Experiences



Cohort Learning Journeys



Outdoor Adventure  
Learning Camp (OALC)

# 1. Values in Action (including everyday responsibilities)

Learning experiences that support students' development as **socially responsible citizens** who contribute meaningfully to the **community**.

## 2. Student Leadership Development

**Tier 1 class-based leadership roles** provide aspiring leaders with the opportunities to hone their leadership skills.





### 3. NE Commemorative Days

Student activities are customised to **create holistic learning experiences** on the defining moments in Singapore history.

# School-based initiatives

Assembly Talks . ASPIRE Wednesday . Enhanced CCE lessons

Thankful Thursday . Quiet Time Deep Breathing

Let's C.H.A.T! (1:1) session/ Circle Time . Class Picnic



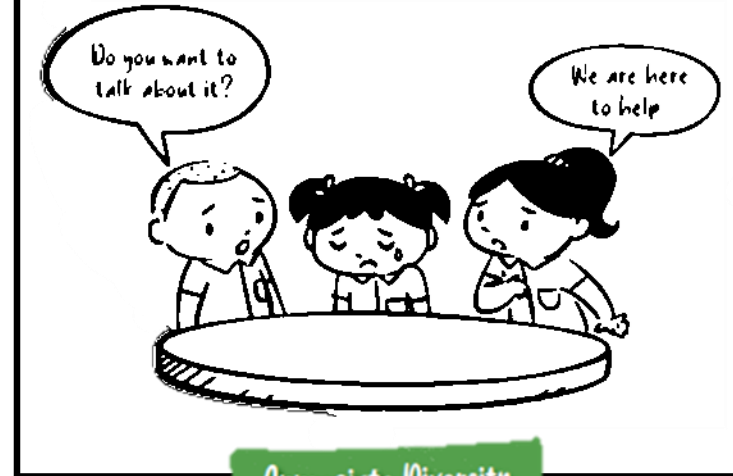
# Caring and Enabling School Environment

## Positive Teacher-Student Relationships



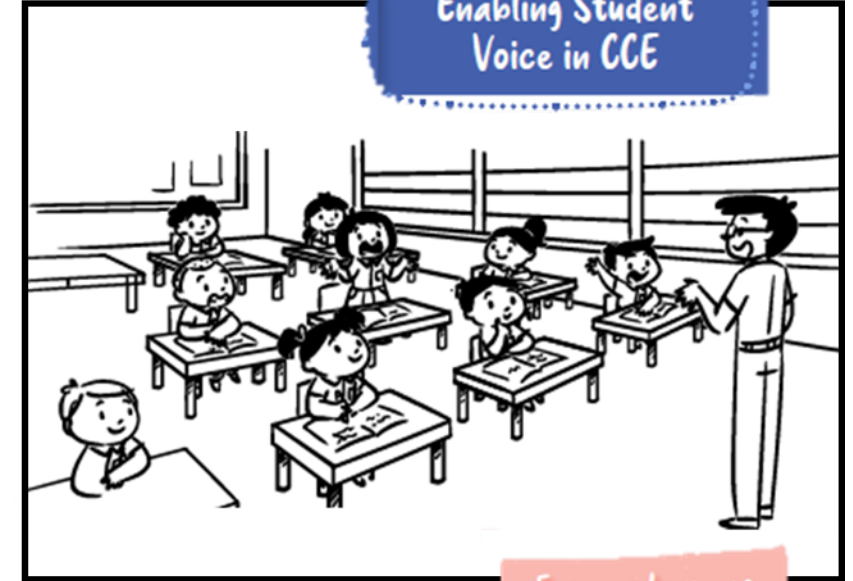
Nurture a Sense of Belonging

## Every Student a Peer Supporter



Appreciate Diversity

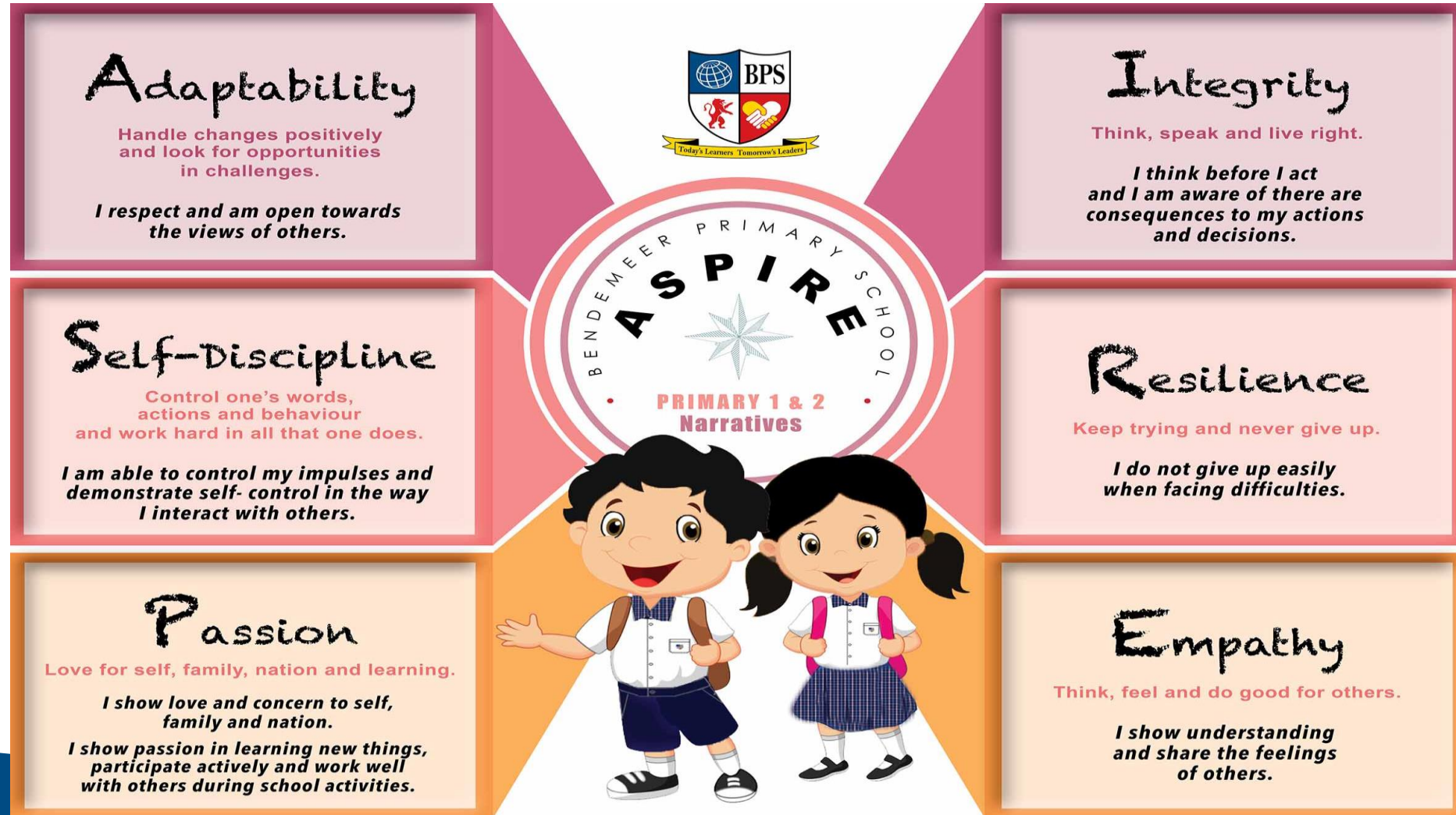
## Enabling Student Voice in CCE



Empower Learners

# Our School Values: **ASPIRE**

Desired Behaviour Outcomes for Primary 1 students:





# Student Recognition

Affirming **student's achievement** in displaying the school values and **character excellence**.

S C H O O L	<ul style="list-style-type: none"><li>• Star Student Award (Term 1 – 3)</li><li>• P1 – 5 Otter Award (Term 4)</li><li>• Well Done Cards</li></ul>
M I N I S T R Y	<ul style="list-style-type: none"><li>• P1 – 6 Edusave Character Award (ECHA) Demonstration of exemplary character and outstanding personal qualities through behaviour and actions.</li><li>• P1 – 6 Edusave Award for Achievement, Good Leadership and Service (EAGLES) Demonstration of good conduct, and 21<sup>st</sup> Century Competencies in a consistent and exemplary manner.</li><li>• P1 – 2 Edusave Merit Bursary (EMB) Consistent demonstration of positive learning dispositions and good conduct.</li></ul>

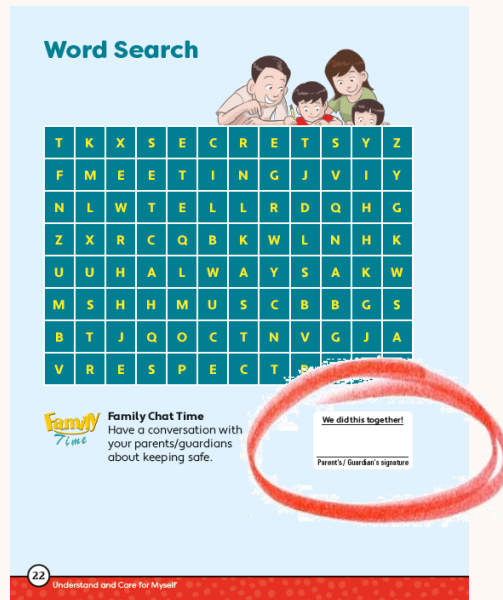
For more information on Edusave Awards and Scholarship, visit: <https://www.moe.gov.sg/financial-matters/awards-scholarships/edusave-awards>



## 4. Home-school partnership

# Home-School Partnership

Building **strong bonds** through **shared experiences** and **meaningful conversations**



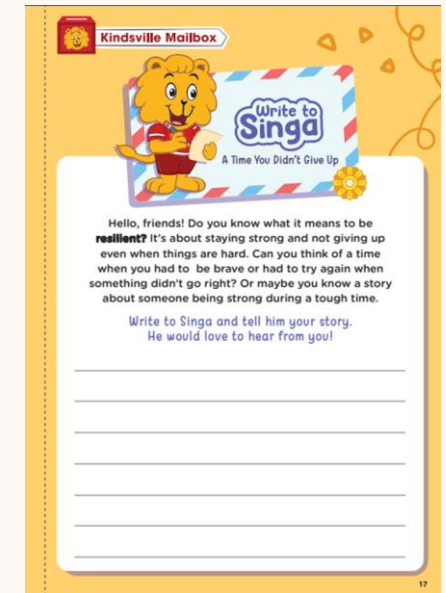
Family Bonding Activities



Useful Parental Tips



Helpful Information and Resources



Kindsville Activity



# THANK YOU

A **gracious community** of **passionate learners** and **confident leaders**

*Today's Learners, Tomorrow's Leaders*

